

For Chartering please Contact Shipbroker



www.North-Sea-Shipbrokers.dk Your best Maritime Partner

Tel: +45 75 12 70 77 E-mail: anders@north-sea-ship.dk

Member of Danish Shipbrokers Association and Bimco

M/V SENTINEL

DP II FOR:

**SURVEY, LIGHT CONSTRUCTION,
ROV, DIVING AND MAINTENANCE SERVICES**



DP II FOR:

**SURVEY, LIGHT CONSTRUCTION,
ROV, DIVING AND MAINTENANCE SERVICES.**

**DURING 2009 THE VESSEL HAS BEEN EXTENSIVELY
UPGRADED
AND FITTED, INTER ALIA, WITH NEW
ACCOMMODATION,
NEW MAIN ENGINES, NEW KONGSBERG DP2 SYSTEM
AND NEW AFT DECK.**



For Chartering please Contact Shipbroker

www.North-Sea-Shipbrokers.dk Your best Maritime Partner

Tel: +45 75 12 70 77 E-mail: anders@north-sea-ship.dk

Member of Danish Shipbrokers Association and Bimco

Flag/Classification:

Flag Italian
Port of Registry Napoli
Register Number 138/NA 1a Sez. Registro Internazionale
IMO Number 7106877
Call Sign IBXS
Classification R.I.Na. 100 A 1.1, AP; ST
Unrestricted Nav.
Dynapos AM/AT R

Main particulars:

Builder Ferguson Brothers Ltd (UK)
Built 1971

Vessel Conversion 1999, 2009

LOA 68.25 mt
LBP 60.96 mt
Breadth 13.41 mt
Depth 7.16 mt
Draft Summer Freeboard 4.57 mt

For the extensive works carried out in 2009 inclusive of the installation of new engines and new accommodations, the vessel conventional age has been reduced by 23 years by RINA.

Capacities:

Deadweight 580 DWT
Gross tonnage 1722 t.
Net tonnage 516 t.
Free deck area abt 220+abt 80 m²
Gasoil abt 400 cbm
Potable water abt 100 cbm

Machinery:

Main engines 1 x 1100 kW CAT3512
2 x 1100 kW W6L20
(installed in 2009)
Main propeller 1470 kW electric driven
fixed propeller in kort nozzle rudder
Bow thruster 1 x 420 kW Gill Jet azimuth
thruster
1 x 600 kW ABB tunnel thruster
Aft thruster 2 x 360 kW Brunvoll tunnel
thruster
Aux. Generators 1 x 370 kW CAT3408

Deck machinery:

**Cranes 1 x COVIS Crane 40 tons @
6.00 mt 4.5 tons @ 24 mt
2 x 2 tons
Mooring Equipment 4 point mooring
Mooring lines: 2 x 1000 mt
2 x 900 mt (fore)
diameter of wire: 32 mm**

Dynamic positioning:

Kongsberg K-POS DP21
(latest version) installed in 2009

Reference Systems:

Simrad HiPAP 500
Kongsberg Fanbeam Mk 4.2
2000 m

Fuel Consumption:

**Steaming abt 11 kn on abt 7 tons
gasoil
Stand by abt 2 tons gasoil
Dynamically positioned abt 5/7 tons gasoil
On 4 point mooring abt 2/4 tons gasoil**

Accommodation:

Total berths 48
Ships' crew 16
Charterers' crew 32 (2 suite + 15 double)
Hospital 1

Other facilities:

recreation rooms: 1 x 32 m²
Mess room 1 x 42 m²
On—Off line room 32 m²
Office #1 16 m²
Office #2 9 m²

All specifications given without guarantee and subject to changes

North Sea Shipbrokers ApS – Nyhavnsgade 37, 6700 Esbjerg, Denmark VAT DK30703030

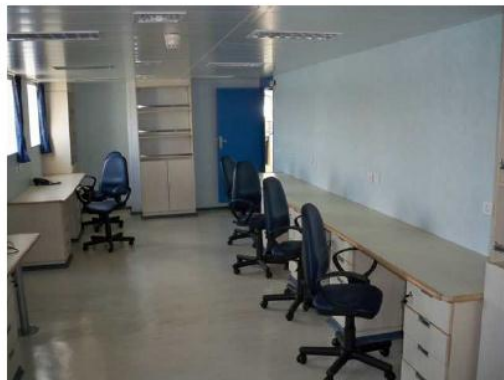
For Chartering please Contact Shipbroker



www.North-Sea-Shipbrokers.dk Your best Maritime Partner

Tel: +45 75 12 70 77 E-mail: anders@north-sea-ship.dk

Member of Danish Shipbrokers Association and Bimco



All specifications given without guarantee and subject to changes

North Sea Shipbrokers ApS – Nyhavnsgade 37, 6700 Esbjerg, Denmark VAT DK30703030

For Chartering please Contact Shipbroker



www.North-Sea-Shipbrokers.dk Your best Maritime Partner

Tel: +45 75 12 70 77 E-mail: anders@north-sea-ship.dk

Member of Danish Shipbrokers Association and Bimco



All specifications given without guarantee and subject to changes

North Sea Shipbrokers ApS – Nyhavnsgade 37, 6700 Esbjerg, Denmark VAT DK30703030