

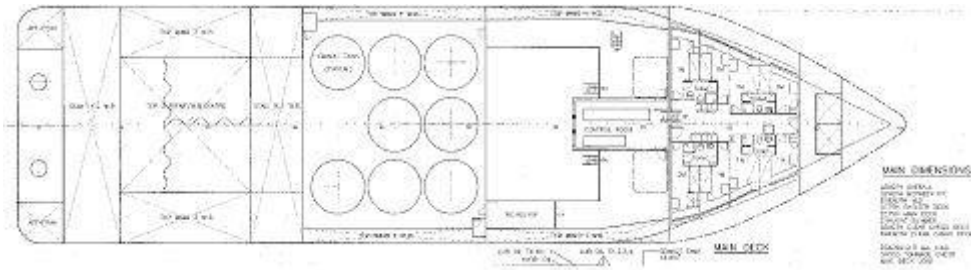
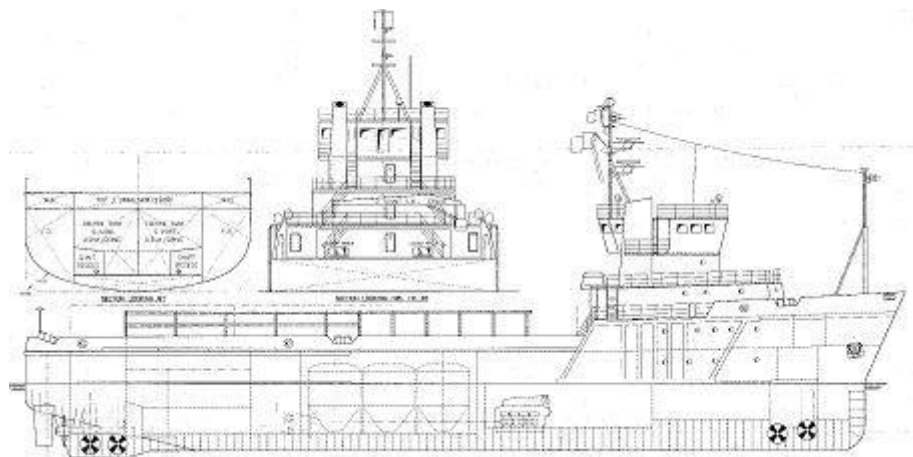
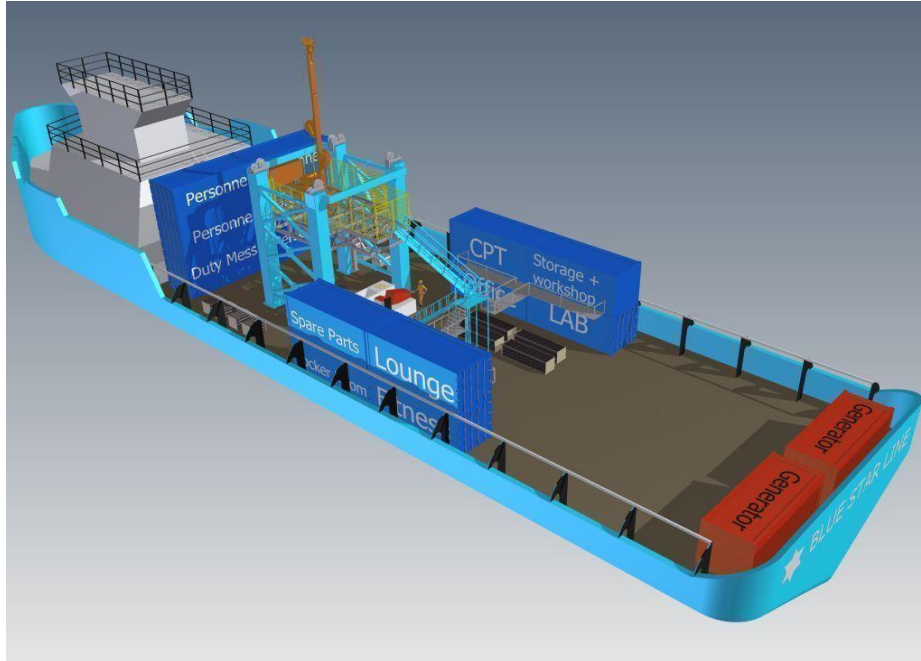
For Chartering please Contact Shipbroker



www.North-Sea-Shipbrokers.dk Your best Maritime Partner

Tel: +45 75 12 70 77 E-mail: anders@north-sea-ship.dk

Member of Danish Shipbrokers Association | Bimco | FPAL





For Chartering please Contact Shipbroker

www.North-Sea-Shipbrokers.dk Your best Maritime Partner

Tel: +45 75 12 70 77 E-mail: anders@north-sea-ship.dk

Member of Danish Shipbrokers Association | Bimco | FPAL

REGISTRATION

Name	M/V Blue Beta
Owner	Blue Star Line Ltd.
Year built/rebuilt	1983 / 2011
Flag	Danish
Classification	DNV 1A1
IMO No.	8112665
Call Sign	OUVZ2
Home Port	Faaborg
ISM/ISPS	DNV Certified

MAIN CHARACTERISTICS

Length overall	68.60 m
Length between P.P	60.00 m
Breadth moulded	17.50 m
Depth moulded	7.40 m
Draft max.	5.02 m
Gross tonnage	2099 tons
Net tonnage	719 tons

PROPULSION

Main Engine	2 x MAK 6M 453 AK Total 5400 hp
Propel	2 x CP propellers

Thrusters	Bow 2 x 800 hp Stern 2 x 800 hp
-----------	------------------------------------

AUXILIARIES

	2 x Scania DS 14 550 kva 380v 50 hz
--	--

CARGO CAPACITY

Clear deck area	660 sqm
Clear deck length	44 m
Clear deck breadth	15 m
Deck cargo capacity	2000 mt
Fuel oil	970 cbm
Drill water	515 cbm
Potable water	598 cbm
Oil based mud	2190 bbls
Base oil	2190 bbls
Brine	2005 bbls
Dry bulk	13500 cuft

PERFORMANCE

Maximum Speed	13 knots
Service Speed	10 knots

CONSUMPTION

Max speed approx	20 cbm/day
Economical speed approx	12 cbm/day
In DP mode approx	9 cbm/day

ACCOMMODATION

Officers	5 single cabin with toilet /shower
Crew	5 single cabin with toilet /shower
Passengers	5 single cabin with toilet /shower
	2 x 2 pax cabin with toilet /shower
Hospital	1 x 1 bed
	Vessel is fully air conditioned for hot and cold climate

ACCOMMODATION ADDITIONAL

	10 x single cabins with toilet / shower in 20 ft container units
	1 x duty messroom in 20 ft container unit
	1 x survey room in 20 ft container unit
	1 x offices in 20 ft container unit
	1 x gymnasium in 20 ft container unit

DECK EQUIPMENT

	2 pcs. Hydraulic capstans 10 tons
	2 pcs. Hydraulic tugger winch 10,0 tons
	1 pcs. Deckcrane 1 x 2 ts at 10 m

CARGO PUMPS

Fuel oil	1x100 cbm/hr 80m
Drill water	1x250 cbm/hr 80m
Potable water	1x120 cbm/hr 80m
Oil based mud	2x82,5 cbm/hr 80m
Brine	110 cbm/hr 80m
Cement	2x35ts/hr 80 PSI

NAVIGATION/COMM. EQUIPMENT

	2 x Radars
	3 x Gyrocompass
	1 x Echosounder
	1 x Autopilot
	2 x GPS
	1 x GMDSS Station A3
	1 VSAT Broadband
	1 x SeaTel Sat. Television
	1 x ECDIS sea chart
	Navis DP 2
	2 x Navis Joystick

SURVEY. EQUIPMENT

	Navi-pack survey system
	Sonerdyne Hipap ranger 2
	2 x Veripos DGPS
	3 x Heave pitch and roll sensors
	1 x BSL Tautwire